



Personality Assessment Inventory™

Score Report

by Leslie C. Morey, PhD and PAR Staff

Generated by

PARiConnect™

Client name : Sample Client
Client ID : 4321
Age : 24
Gender : Male
Education : 12
Marital status : Single
Test date : 05/13/2013

This report is intended for use by qualified professionals only and is not to be shared with the examinee or any other unqualified persons.

PAR 16204 N. Florida Ave. | Lutz, FL 33549 | 1.800.331.8378 | parinc.com

Personality Assessment Inventory copyright © 1989, 1990, 1991 by PAR. All rights reserved. PAI Plus Score Report copyright © 1990, 1991, 1993, 1995, 1998, 2000, 2008, 2020 by PAR. All rights reserved. May not be reproduced in whole or in part in any form or by any means without written permission of PAR. "Personality Assessment Inventory" is a trademark and "PAI" is a registered trademark owned by PAR.

Contents

[Full Scale Profile with Motor Vehicle Accident Claimants Profile Overlay](#)

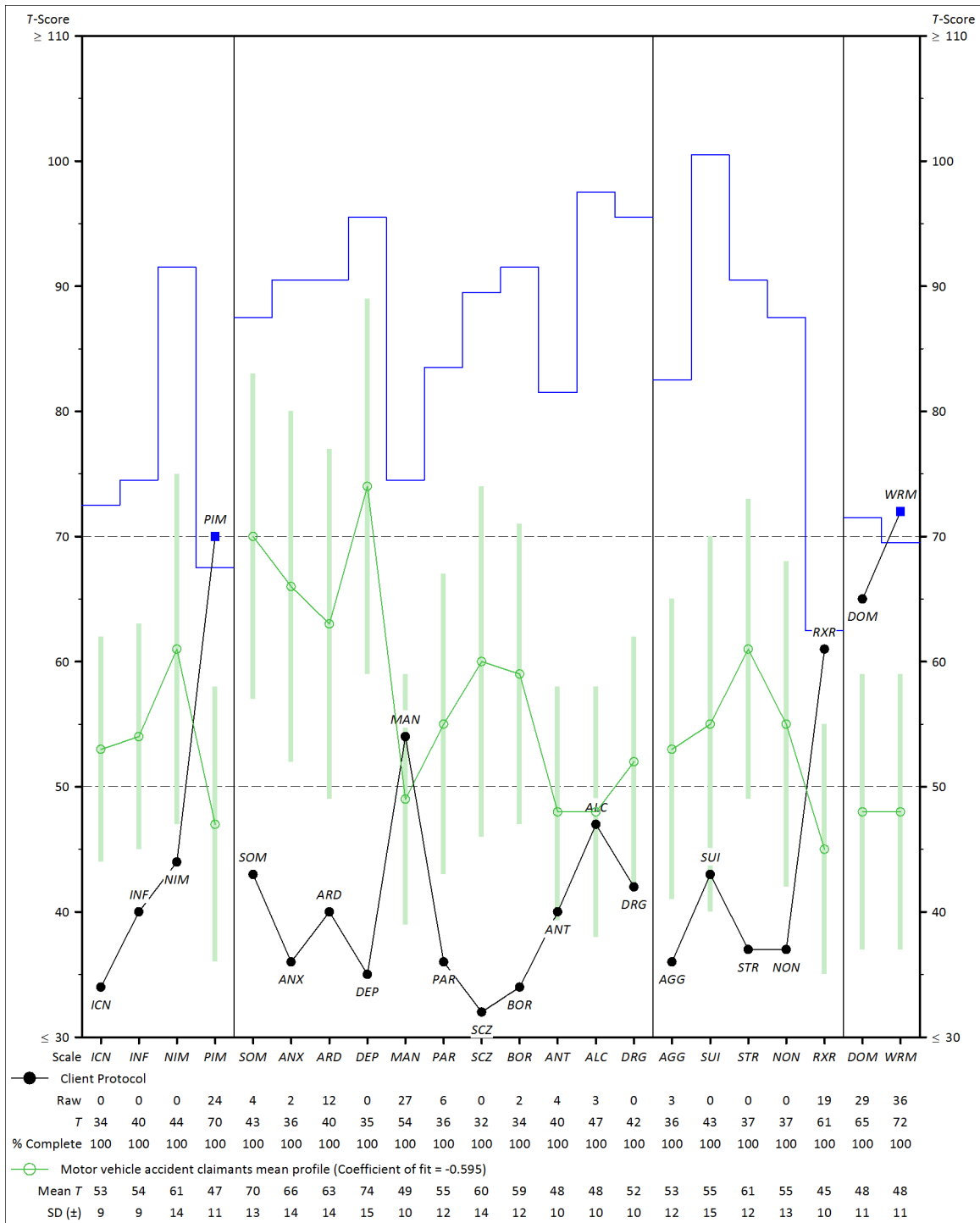
[Subscale Profile with Motor Vehicle Accident Claimants Profile Overlay](#)

[Additional Profile Information](#)

[Critical Item Endorsement](#)

[PAI Item Responses](#)

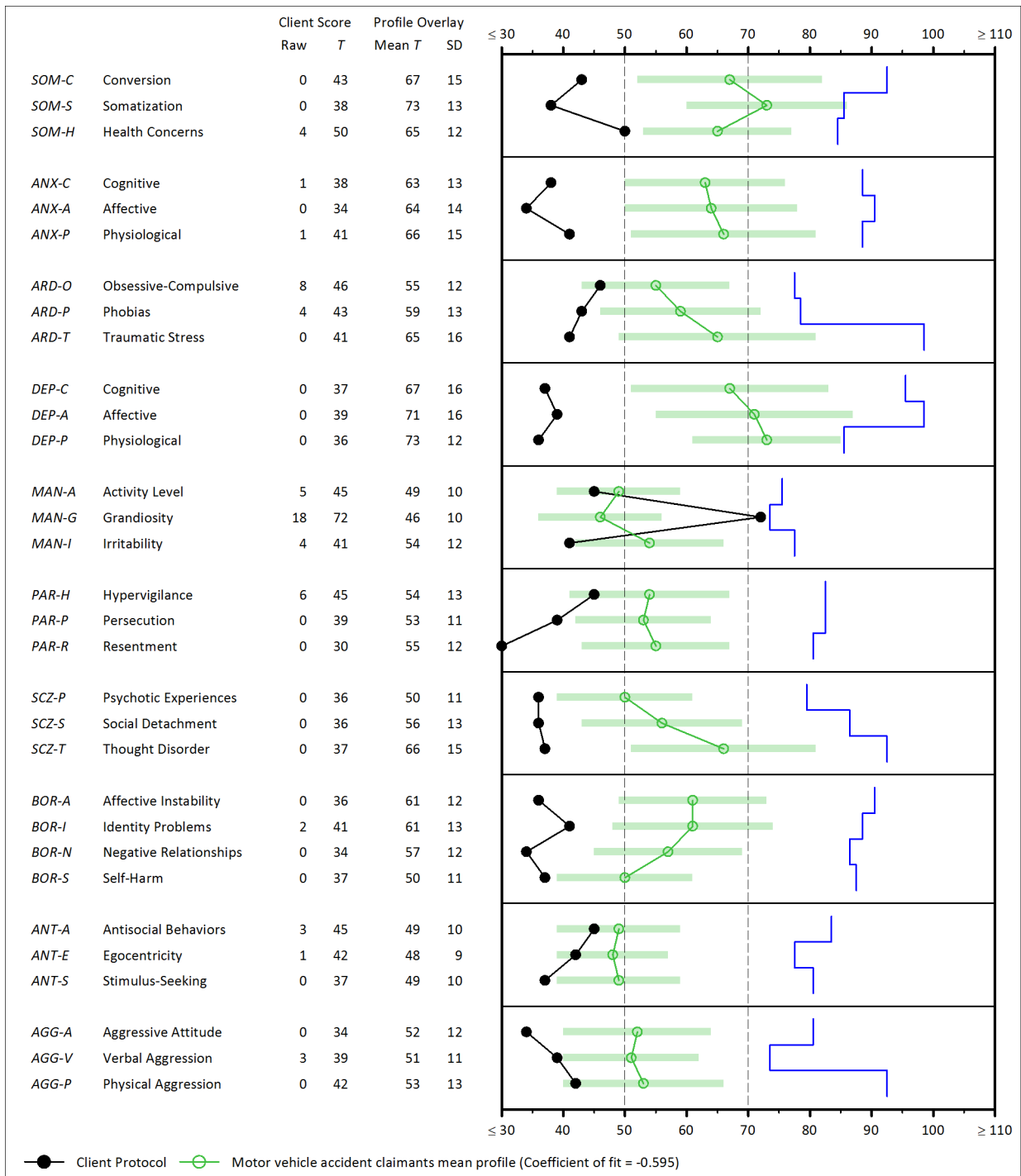
Full Scale Profile with Motor Vehicle Accident Claimants Profile Overlay



Plotted T scores are based upon a Census-matched standardization sample of 1,000 normal adults.

- indicates the score is more than two standard deviations above the mean for a sample of 1,246 clinical patients.
- ◆ indicates the scale has more than 20% missing items.

Subscale Profile with Motor Vehicle Accident Claimants Profile Overlay



Missing Items = 0

Plotted T scores are based upon a Census-matched standardization sample of 1,000 normal adults.

- indicates the score is more than two standard deviations above the mean for a sample of 1,246 clinical patients.
- ◆ indicates the scale has more than 20% missing items.

Additional Profile Information

Supplemental PAI Indices		
Negative Distortion Indicators	Raw value	T score
Malingering Index	0	44
Rogers Discriminant Function	-1.63	44
Negative Distortion Scale*	4	49
Hong Malingering Index*	-2.62	40
Multiscale Feigning Index*	N/A	39
Malingered Pain-Related Disability Discriminant Function*	-0.94	40
Positive Distortion Indicators	Raw value	T score
Defensiveness Index	6	70
Cashel Discriminant Function	150.56	58
Positive Distortion Scale*	41	64
Hong Defensiveness Index*	1.13	72
Non-systematic Distortion Indicators	Raw value	T score
Back Random Responding	16	65
Hong Randomness Index*	-4.42	38
Supplemental Clinical Indicators	Raw value	T score
Suicide Potential Index	0	40
Violence Potential Index	1	47
Treatment Process Index	2	55
ALC Estimated Score	N/A	47 (Equal to ALC)
DRG Estimated Score	N/A	44 (2T higher than DRG)
Mean Clinical Elevation	N/A	40
Inattention (INATTN) Index*	1	56
Neuro-Item Sum*	0	37
Violence and Aggression Risk Index*	0	39
Reactive Aggression Scale*	9	37
Instrumental Aggression Scale*	21	54
Level of Care Index*	1	42
Chronic Suicide Risk (S_Chron) Index*	1	33
RXR Estimated Score*	N/A	54 (7T lower than RXR)

Note: Experimental indices are denoted with an asterisk (*) and italicized text. They should be interpreted with caution **because of the limited cross-validation research.** “---” indicates the value could not be calculated due to missing data.

Additional Profile Information (continued)

Coefficients of fit with profiles of known clinical groups	
Diagnostic Groups	Coefficient of fit
Unspecified somatic symptom and related disorder	-0.551
Alcohol use disorders	-0.587
Bipolar I disorder (mania)	-0.591
Substance use disorders	-0.608
Adjustment disorders	-0.631
Antisocial personality disorder	-0.716
Major depressive disorder	-0.741
Anxiety disorders	-0.764
Schizoaffective disorder	-0.775
Posttraumatic stress disorder	-0.780
Schizophrenia	-0.782
Borderline personality disorder	-0.790
Persistent depressive disorder (dysthymia)	-0.791
PAI Cluster Profiles	Coefficient of fit
Cluster 1	-0.160
Cluster 9	-0.252
Cluster 8	-0.528
Cluster 5	-0.563
Cluster 3	-0.585
Cluster 7	-0.737
Cluster 4	-0.750
Cluster 10	-0.811
Cluster 2	-0.813
Cluster 6	-0.822
Symptom Behavior Groups	Coefficient of fit
Spouse abusers	-0.387
Prisoners	-0.569
Current suicide	-0.701
Perpetrators of rape	-0.744
Current aggression	-0.761
Suicide history	-0.766
Self-mutilation	-0.806
Antipsychotic medications	-0.814
Assault history	-0.819
Auditory hallucinations	-0.839
Persecutory (paranoid) delusions	-0.846

Note: Coefficients above a value of .42 represent statistically significant associations between profiles.

Additional Profile Information (continued)

Coefficients of fit with profiles of known clinical groups	
Response Set Groups	Coefficient of fit
Fake good	0.902
PIM predicted profile	0.832
NIM predicted profile	0.279
All "false"	-0.405
All "very true"	-0.567
All "mainly true"	-0.596
All "slightly true"	-0.644
Random responding	-0.746
Fake bad	-0.769
Context-Specific Norm Groups	Coefficient of fit
Egg donors and gestational carriers	0.933
Potential kidney donors	0.917
Law enforcement officer candidates	0.909
Child custody evaluations	0.815
Bariatric surgery candidates	0.631
College students	-0.010
Chronic pain patients	-0.234
Deployed military	-0.310
Motor vehicle accident claimants	-0.595

Note: Coefficients above a value of .42 represent statistically significant associations between profiles.

Critical Item Endorsement

A total of 27 PAI items reflecting serious pathology have very low endorsement rates in normal samples. These items have been termed critical items. Endorsement of these critical items is not in itself diagnostic, but review of the content of these items with the respondent may help to clarify the presenting clinical picture. In this case, the respondent did not endorse any of the critical items.

PAI Item Responses

1.	VT	44.	F	87.	F	130.	F	173.	F	216.	F	259.	VT	302.	F
2.	F	45.	F	88.	VT	131.	F	174.	VT	217.	ST	260.	F	303.	F
3.	F	46.	F	89.	F	132.	F	175.	F	218.	MT	261.	F	304.	F
4.	F	47.	F	90.	F	133.	VT	176.	MT	219.	VT	262.	F	305.	F
5.	F	48.	ST	91.	F	134.	F	177.	F	220.	F	263.	F	306.	VT
6.	F	49.	F	92.	F	135.	F	178.	VT	221.	VT	264.	F	307.	VT
7.	F	50.	F	93.	VT	136.	F	179.	F	222.	F	265.	F	308.	F
8.	MT	51.	F	94.	VT	137.	F	180.	F	223.	F	266.	MT	309.	F
9.	F	52.	F	95.	F	138.	ST	181.	F	224.	F	267.	VT	310.	VT
10.	F	53.	VT	96.	VT	139.	VT	182.	F	225.	MT	268.	VT	311.	F
11.	VT	54.	F	97.	F	140.	F	183.	F	226.	ST	269.	F	312.	F
12.	F	55.	F	98.	F	141.	F	184.	F	227.	VT	270.	VT	313.	VT
13.	VT	56.	VT	99.	F	142.	VT	185.	VT	228.	ST	271.	F	314.	F
14.	F	57.	F	100.	F	143.	F	186.	VT	229.	VT	272.	F	315.	F
15.	VT	58.	F	101.	F	144.	ST	187.	F	230.	VT	273.	F	316.	F
16.	VT	59.	F	102.	F	145.	F	188.	F	231.	F	274.	F	317.	VT
17.	F	60.	F	103.	VT	146.	VT	189.	F	232.	F	275.	F	318.	VT
18.	MT	61.	F	104.	F	147.	F	190.	VT	233.	F	276.	F	319.	VT
19.	F	62.	F	105.	F	148.	VT	191.	F	234.	F	277.	VT	320.	VT
20.	F	63.	VT	106.	F	149.	F	192.	F	235.	VT	278.	F	321.	F
21.	F	64.	F	107.	F	150.	F	193.	MT	236.	F	279.	F	322.	F
22.	F	65.	F	108.	MT	151.	ST	194.	F	237.	VT	280.	F	323.	F
23.	F	66.	F	109.	VT	152.	VT	195.	F	238.	F	281.	F	324.	F
24.	F	67.	F	110.	F	153.	F	196.	F	239.	F	282.	F	325.	F
25.	F	68.	VT	111.	F	154.	F	197.	VT	240.	VT	283.	F	326.	VT
26.	F	69.	F	112.	VT	155.	F	198.	F	241.	F	284.	F	327.	F
27.	F	70.	F	113.	F	156.	F	199.	F	242.	MT	285.	VT	328.	F
28.	VT	71.	F	114.	F	157.	F	200.	F	243.	F	286.	VT	329.	F
29.	F	72.	F	115.	VT	158.	F	201.	VT	244.	VT	287.	VT	330.	VT
30.	F	73.	F	116.	F	159.	F	202.	VT	245.	VT	288.	MT	331.	VT
31.	F	74.	F	117.	F	160.	VT	203.	F	246.	VT	289.	F	332.	F
32.	F	75.	VT	118.	F	161.	VT	204.	F	247.	MT	290.	VT	333.	VT
33.	F	76.	MT	119.	F	162.	F	205.	F	248.	ST	291.	VT	334.	VT
34.	F	77.	VT	120.	F	163.	F	206.	F	249.	F	292.	ST	335.	F
35.	F	78.	F	121.	F	164.	VT	207.	F	250.	F	293.	VT	336.	F
36.	MT	79.	F	122.	F	165.	F	208.	F	251.	F	294.	VT	337.	ST
37.	VT	80.	VT	123.	F	166.	F	209.	F	252.	VT	295.	VT	338.	F
38.	F	81.	VT	124.	VT	167.	F	210.	F	253.	VT	296.	VT	339.	F
39.	F	82.	F	125.	VT	168.	ST	211.	VT	254.	F	297.	MT	340.	F
40.	F	83.	F	126.	F	169.	F	212.	F	255.	F	298.	VT	341.	VT
41.	VT	84.	F	127.	VT	170.	F	213.	F	256.	ST	299.	VT	342.	VT
42.	F	85.	MT	128.	VT	171.	F	214.	F	257.	ST	300.	F	343.	VT
43.	F	86.	F	129.	F	172.	F	215.	F	258.	F	301.	VT	344.	ST

End of Report

