



BARIATRIC

Personality Assessment Inventory™

Bariatric Score Report

by Leslie C. Morey, PhD and Sierra Iwanicki, PhD

Generated by
PARiConnect™

Client name:	Sample Client
Client ID:	12345
Age:	31
Gender:	Male
Education:	18
Marital status:	Divorced
Test date:	12/11/2023
Language administered:	English
Previous psychological testing:	-Not Specified-
Type of surgery:	-Not Specified-

The interpretive information contained in this report should be viewed as only one source of hypotheses about the individual being evaluated. No decisions should be based solely on the information contained in this report. This material should be integrated with all other sources of information in reaching professional decisions about this individual.

This report is intended for use by qualified professionals only and is not to be shared with the examinee or any other unqualified persons.

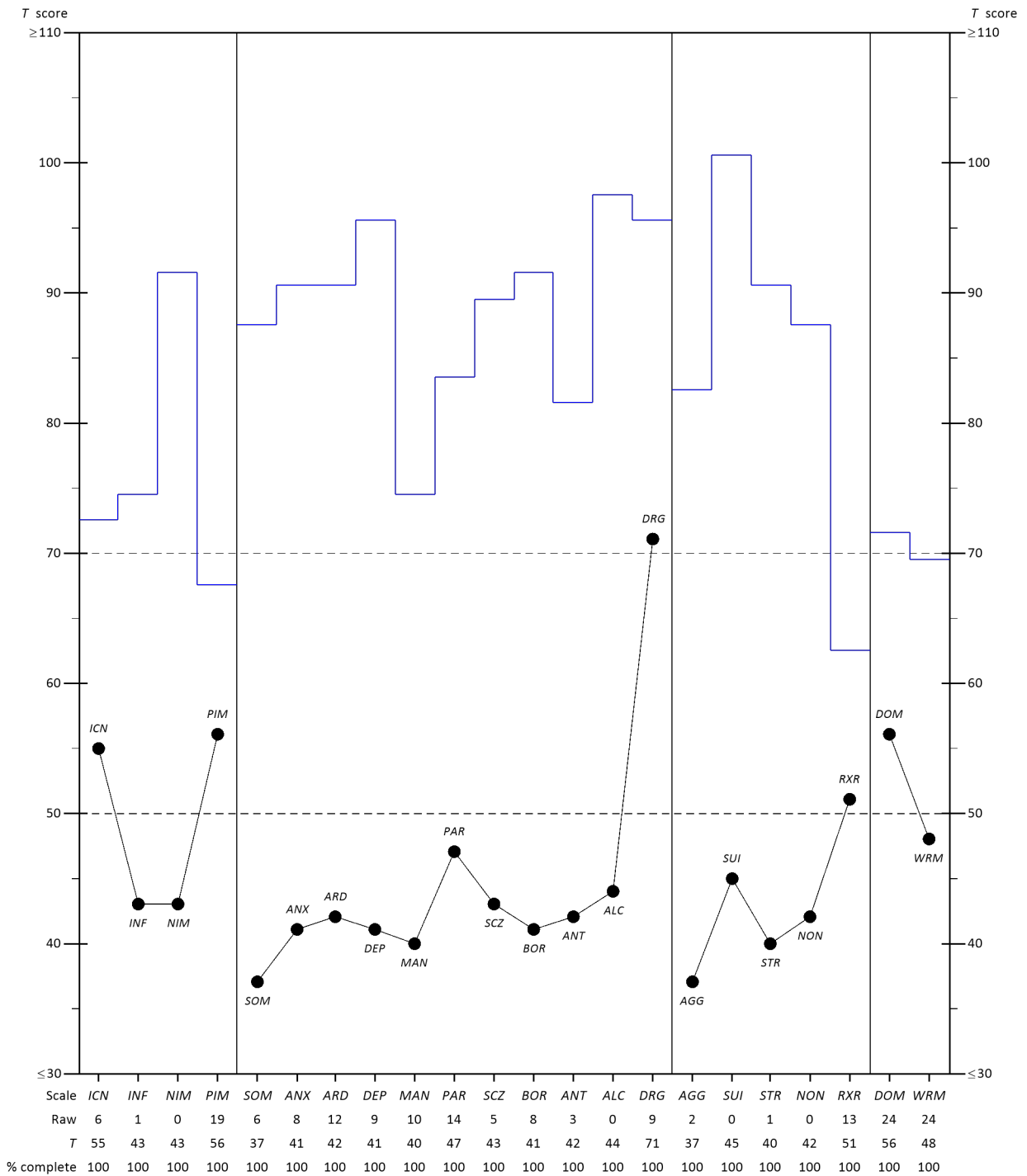
PAR® 16204 N. Florida Ave. | Lutz, FL 33549 | 1.800.331.8378 | parinc.com

Personality Assessment Inventory copyright © 1989, 1990, 1991 by PAR. All rights reserved. PAI Bariatric Score Report copyright © 2023. All rights reserved. May not be reproduced in whole or in part in any form or by any means without written permission of PAR. "Personality Assessment Inventory" is a trademark and "PAI" is a registered trademark owned by PAR.

Contents

- PAI Full Scale Profile Based on Bariatric Surgery Patients
- PAI Subscale Profile Based on Bariatric Surgery Patients
- PAI Full Scale Profile With Bariatric Surgery Patient Overlay
- PAI Subscale Profile With Bariatric Surgery Patient Overlay
- NIM/PIM-Specific Full Scale and Subscale Profiles
- Validity Indicators and Response Set Groups
- Score Summary by Domain
- Additional Profile Information
- DSM-5 Diagnostic Possibilities
- Bariatric-Relevant Item Endorsement
- PAI Item Responses

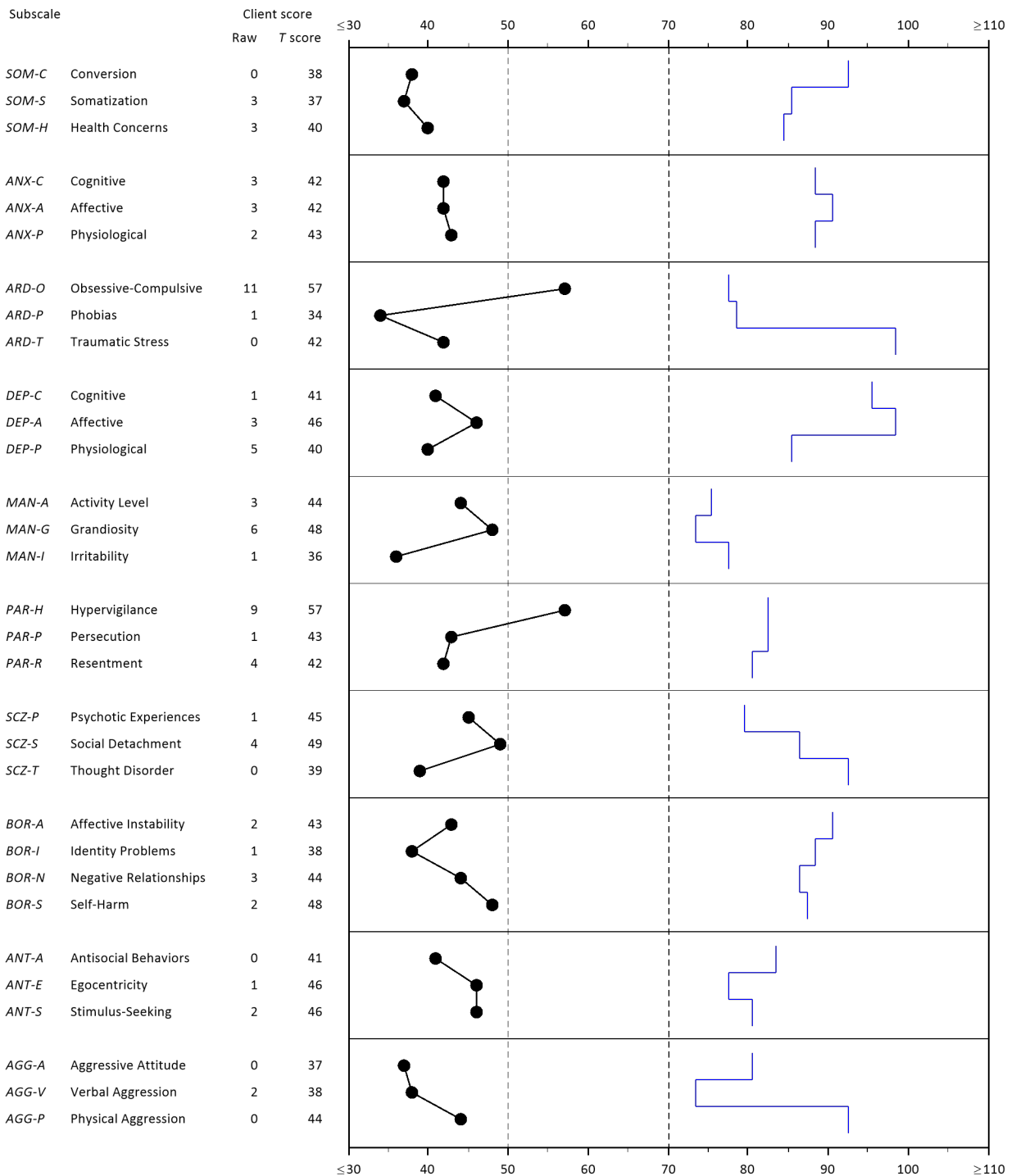
PAI Full Scale Profile Based on Bariatric Surgery Patients



Note. Plotted T scores (indicated as •) are based on means and standard deviations of successful bariatric surgery patients (n = 931). The blue profile skyline indicates two standard deviations above the mean for the PAI clinical sample (n = 1,246).

- The score is more than two standard deviations above the mean for the PAI clinical sample.
- ◆ The scale has more than 20% missing items.

PAI Subscale Profile Based on Bariatric Surgery Patients

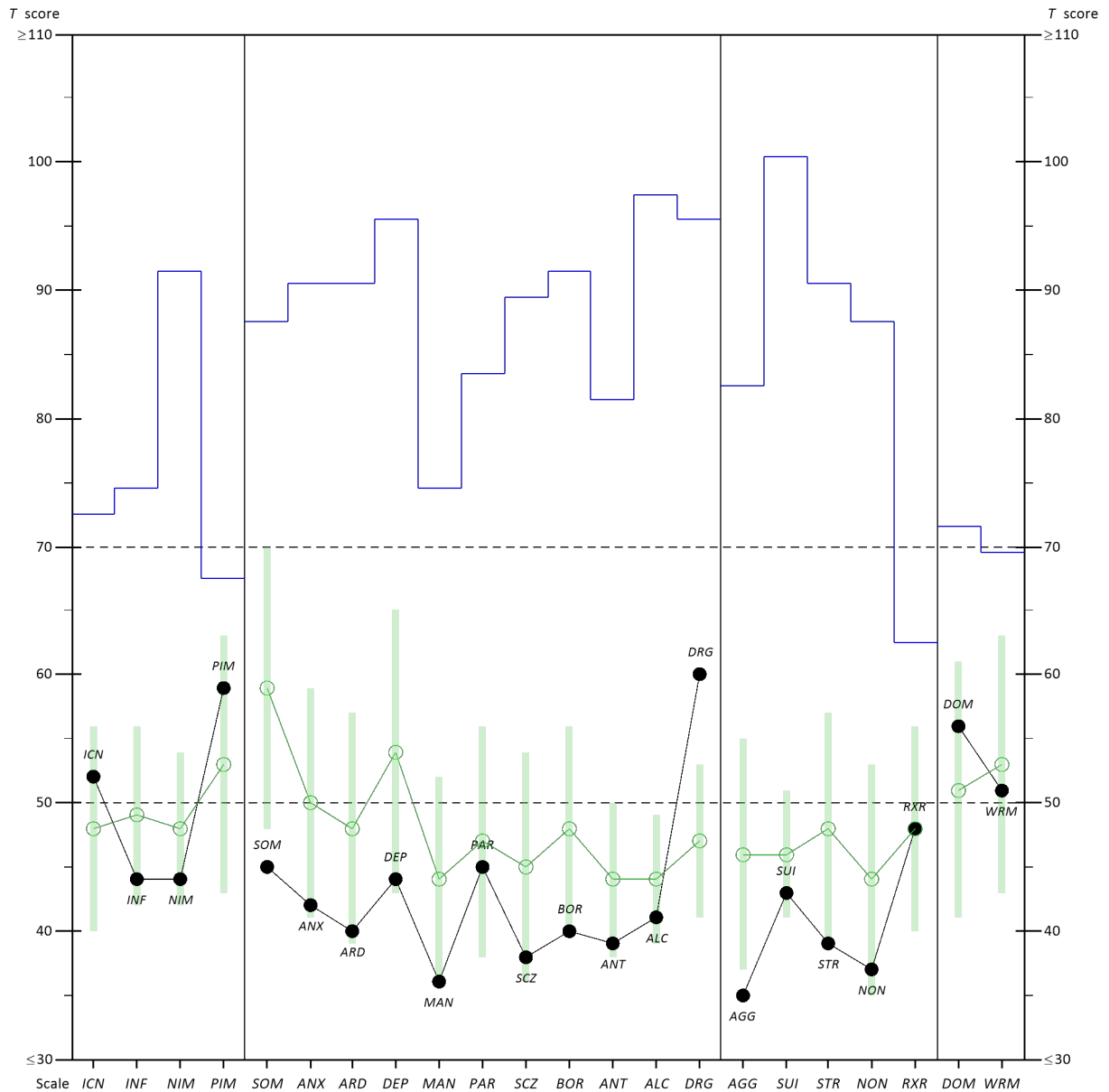


Missing Items = 0

Note. Plotted T scores (indicated as •) are based on means and standard deviations of successful bariatric surgery patients (n = 931). The blue profile skyline indicates two standard deviations above the mean for the PAI clinical sample (n = 1,246).

- The score is more than two standard deviations above the mean for the PAI clinical sample.
- ◆ The scale has more than 20% missing items.

PAI Full Scale Profile With Bariatric Surgery Patient Overlay

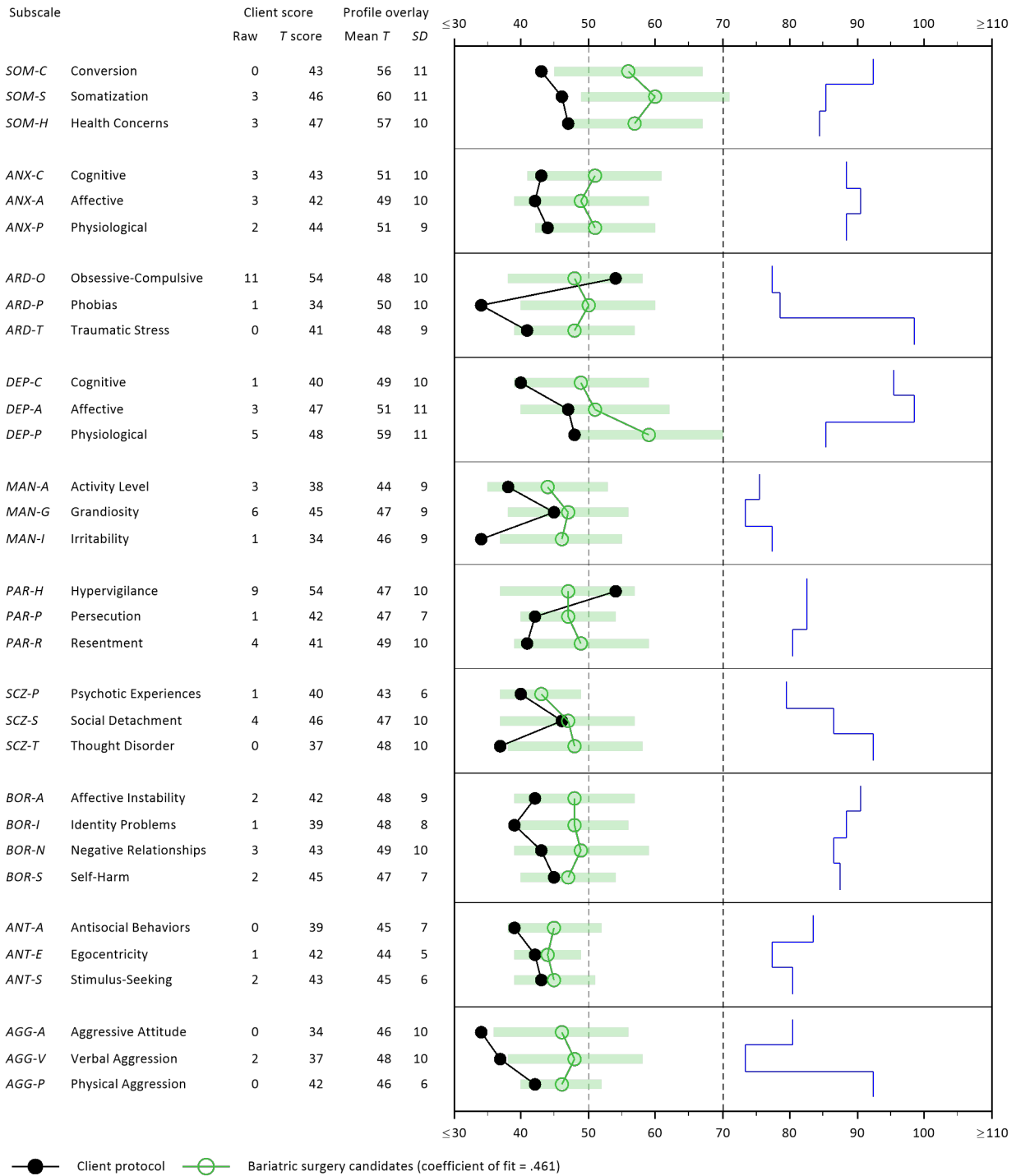


● Client protocol	ICN	INF	NIM	PIM	SOM	ANX	ARD	DEP	MAN	PAR	SCZ	BOR	ANT	ALC	DRG	AGG	SUI	STR	NON	RXR	DOM	WRM
Raw	6	1	0	19	6	8	12	9	10	14	5	8	3	0	9	2	0	1	0	13	24	24
T	52	44	44	59	45	42	40	44	36	45	38	40	39	41	60	35	43	39	37	48	56	51
% complete	100	100	100	100	100	100	100	100	100	100	100	100	100	100	100	100	100	100	100	100	100	100
○ Bariatric surgery candidates mean profile (coefficient of fit = .461)																						
Mean T	48	49	48	53	59	50	48	54	44	47	45	48	44	44	47	46	46	48	44	48	51	53
SD (±)	8	7	6	10	11	9	9	11	8	9	9	8	6	5	6	9	5	9	9	8	10	10

Note. Plotted T scores are based on a U.S. Census-matched standardization sample of normal adults (n = 1,000). The bariatric surgery patient profile overlay is based on a sample of successful bariatric surgery patients. The blue profile skyline indicates two standard deviations above the mean for the PAI clinical sample (n = 1,246).

- The score is more than two standard deviations above the mean for the PAI clinical sample.
- ◆ The scale has more than 20% missing items.

PAI Subscale Profile With Bariatric Surgery Patient Overlay



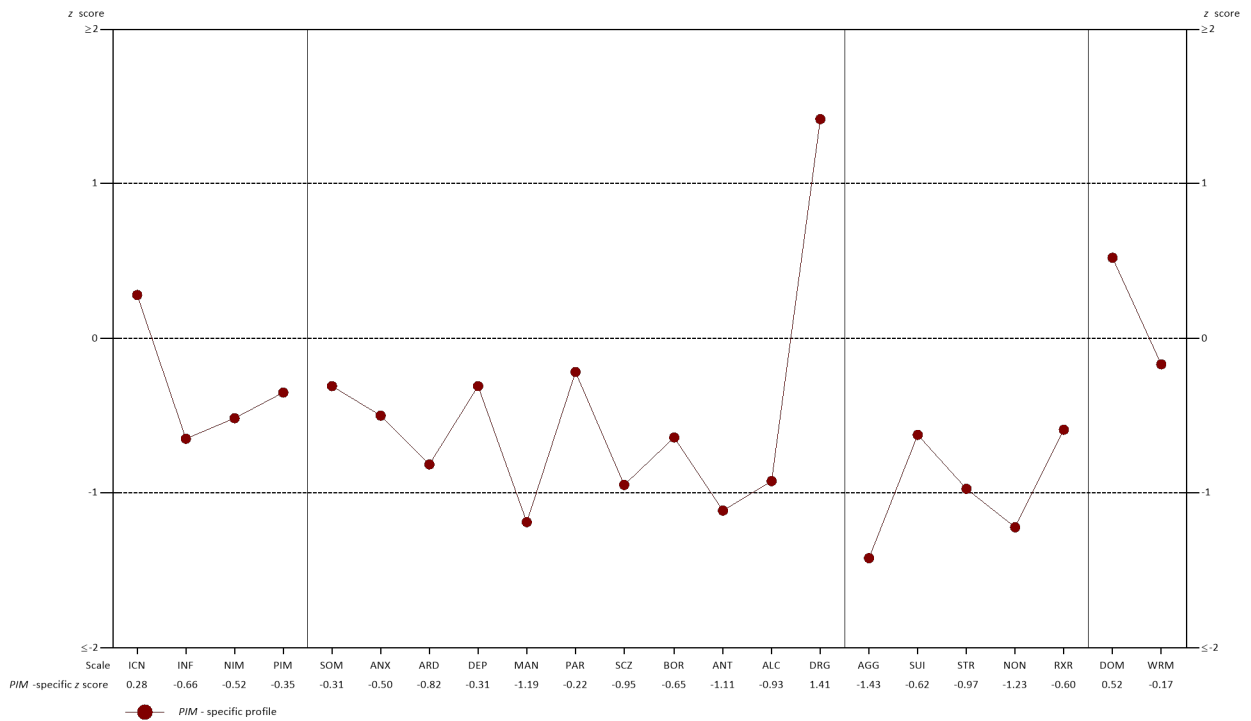
Missing Items = 0

Note. Plotted T scores are based on a U.S. Census-matched standardization sample of normal adults (n = 1,000). The bariatric surgery patient profile overlay is based on a sample of successful bariatric surgery patients (n = 931). The blue profile skyline indicates two standard deviations above the mean for the PAI clinical sample (n = 1,246).

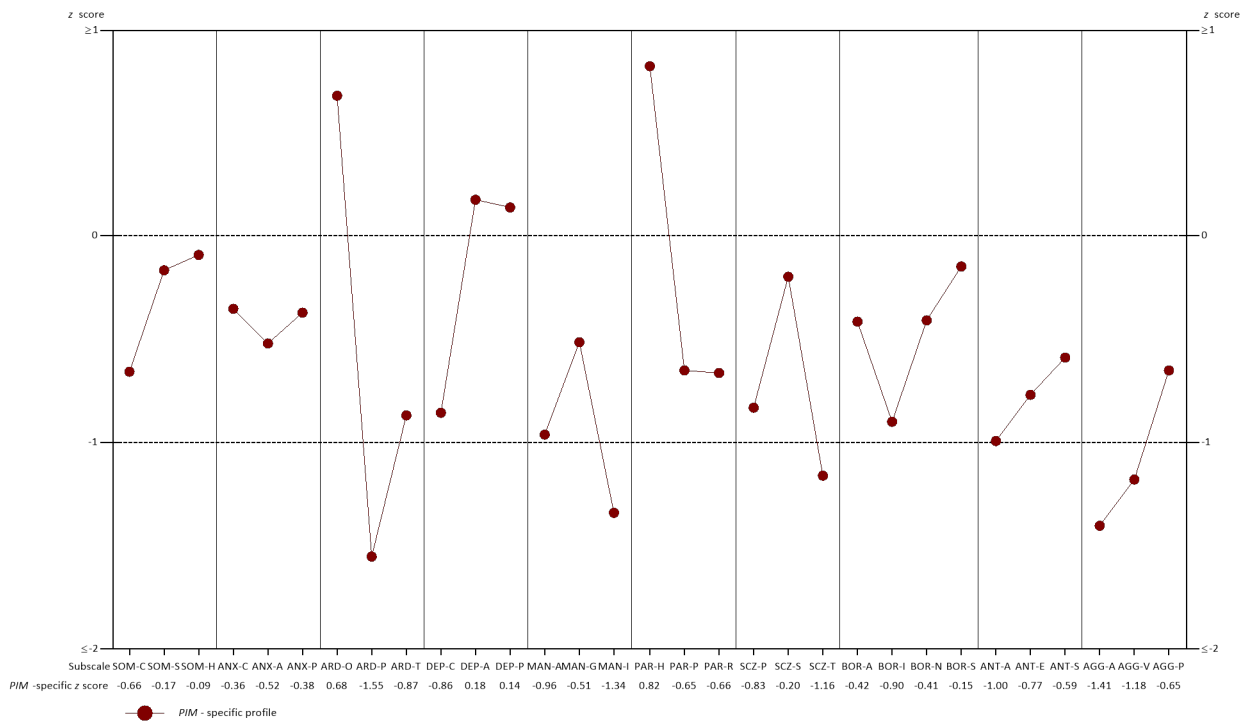
- The score is more than two standard deviations above the mean for the PAI clinical sample.
- ◆ The scale has more than 20% missing items.

PIM-Specific Full Scale / Subscale Profiles

Full Scale Profile



Subscale Profile



Validity Indicators and Response Set Groups

These scores are based on the original PAI samples (community sample of normal adults n = 1000; clinical sample n = 1,246) and do not reflect adjustments based on the sample of bariatric surgery patients.

PAI Scores by Validity Indicator and Response Set Group		
Nonsystematic distortion indicator	Raw value	T score
Missing items	0	n/a
Inconsistency	6	52T
Infrequency	1	44T
Back Random Responding	7	48T
Hong Randomness Index*	-2.57	51T
	Coefficient of fit	
Random responding	-.404	
All "False"	.126	
All "Slightly True"	-.324	
All "Mainly True"	-.474	
All "Very True"	-.434	
Positive distortion indicator	Raw value	T score
Positive Impression	19	59T
Defensiveness Index	6	70T
Cashel Discriminant Function	130.91	45T
Positive Distortion Scale*	31	51T
Hong Defensiveness Index*	-0.01	62T
	Coefficient of fit	
PIM-predicted profile	.714	
Fake good	.479	
Negative distortion indicator	Raw value	T score
Negative Impression	0	44T
Malingering Index	0	44T
Rogers Discriminant Function	-1.45	46T
Hong Malingering Index*	-2.37	43T
Multiscale Feigning Index*	N/A	41T
Malingered Pain-Related Disability Discriminant Function*	0.00	47T
	Coefficient of fit	
NIM-predicted profile	.165	
Fake bad	-.523	

Note. Coefficients above .42 represent statistically significant associations between profiles. Experimental indices are denoted with an asterisk (*) and italicized text. They should be interpreted with caution because of the limited cross-validation research. "---" indicates the value could not be calculated due to missing data.

Score Summary by Domain

These scores are based on the original PAI samples (community sample of normal adults n = 1,000; clinical sample n = 1,246) and do not reflect adjustments based on the sample of bariatric surgery patients.

Score Summary by Domain		
Psychopathology	Raw value	T score
Mean Clinical Elevation	N/A	43T
Somatic Complaints	6	45T
Conversion	0	43T
Somatization	3	46T
Health Concerns	3	47T
Anxiety-Related Disorders	12	40T
Obsessive-Compulsive	11	54T
Phobias	1	34T
Traumatic Stress	0	41T
Borderline Features	8	40T
Affective Instability	2	42T
Identity Problems	1	39T
Negative Relationships	3	43T
Self-Harm	2	45T
Depression	9	44T
Cognitive	1	40T
Affective	3	47T
Physiological	5	48T
Schizophrenia	5	38T
Psychotic Experiences	1	40T
Social Detachment	4	46T
Thought Disorder	0	37T
Level of Care Index*	1	42T
	Coefficient of fit	
Antipsychotic medications	-.503	
Auditory hallucinations	-.600	
Persecutory (paranoid) delusions	-.575	

Suicidality and self-harm	Raw value	T score
Suicidal Ideation	0	43T
Suicide Potential Index	0	40T
Chronic Suicide Risk (S_Chron) Index*	4	42T
	Coefficient of fit	
Current suicide	-.446	
Suicide history	-.473	
Self-mutilation	-.486	
Cognitive functioning	Raw value	T score
Inconsistency	6	52T
Infrequency	1	44T
Inattention (INATTN) Index*	0	45T
Neuro-Item Sum*	6	48T
Substance use	Raw value	T score
Alcohol Problems	0	41T
Drug Problems	9	60T
ALC Estimated Score	N/A	49T (8T higher than ALC)
DRG Estimated Score	N/A	45T (15T lower than DRG)
Impulsivity	Raw value	T score
Mania	10	36T
Activity Level	3	38T
Grandiosity	6	45T
Irritability	1	34T
Borderline Features-Self-Harm	2	45T
Antisocial Behaviors-Stimulus-Seeking	2	43T
Anger and aggression	Raw value	T score
Aggression	2	35T
Aggressive Attitude	0	34T
Verbal Aggression	2	37T
Physical Aggression	0	42T
Violence Potential Index	0	43T
Violence and Aggression Risk Index*	1	43T
Reactive Aggression Scale*	10	38T
Instrumental Aggression Scale*	15	45T
	Coefficient of fit	
Assault history	-.540	
Current aggression	-.541	

Stress and interpersonal functioning	Raw value	T score
Stress	1	39T
Dominance	24	56T
Warmth	24	51T
Nonsupport	0	37T
Borderline Features - Negative Relationships	3	43T
Schizophrenia - Social Detachment	4	46T
Treatment-related indicator	Raw value	T score
Treatment Rejection	13	48T
Treatment Process Index	0	44T
RXR Estimated Score*	N/A	52T (4T higher than RXR)
Level of Care Index	1	42T

Note. Coefficients above .42 represent statistically significant associations between profiles. Experimental indices are denoted with an asterisk (*) and italicized text. They should be interpreted with caution because of the limited cross-validation research. “---” indicates the value could not be calculated due to missing data.

Additional Profile Information

These scores are based on the original PAI samples (community sample of normal adults n = 1,000; clinical sample n = 1,246) and do not reflect adjustments based on the sample of bariatric surgery patients. Profiles are ordered highest to lowest based on magnitude of the coefficient of fit.

Coefficients of Fit With Diagnostic Groups and Modal Cluster Profiles	
Diagnostic group	Coefficient of fit
Substance use disorders	-.191
Alcohol use disorders	-.361
Unspecified somatic symptom and related disorder	-.381
Antisocial personality disorder	-.381
Adjustment disorders	-.484
Major depressive disorder	-.484
Schizoaffective disorder	-.507
Persistent depressive disorder (dysthymia)	-.534
Bipolar I disorder (mania)	-.535
Schizophrenia	-.546
Borderline personality disorder	-.558
Anxiety disorders	-.579
Posttraumatic stress disorder	-.606
Modal cluster profile	Coefficient of fit
Cluster 1	.104
Cluster 9	-.076
Cluster 3	-.298
Cluster 8	-.300
Cluster 4	-.459
Cluster 5	-.475
Cluster 2	-.506
Cluster 7	-.517
Cluster 10	-.574
Cluster 6	-.613

Note. Coefficients above .42 represent statistically significant associations between profiles.

DSM-5 Diagnostic Possibilities

Listed below are DSM-5 diagnostic possibilities suggested by the configuration of PAI scale scores. The following are advanced as hypotheses; all available sources of information should be considered prior to establishing final diagnoses.

Diagnostic Considerations		
DSM-5 code	ICD-10 code	Diagnosis
		Diagnosis deferred

Bariatric-Relevant Item Endorsement

Bariatric-Relevant Item Endorsement			
Potential for self-harm			
Item #	Item (scale/subscale)	Response	% of bariatric sample
	[Item content omitted from sample report]	F	92.8%
		F	92.3%
		F	98.1%
		F	98.4%
		F	98.3%
		F	95.3%
		F	97.0%
		F	98.1%
		F	86.5%
		VT	89.5%
		F	99.0%
		VT	74.1%
		F	99.2%
		F	96.5%
Mental status, delusions, and hallucinations			
Item #	Item (scale/subscale)	Response	% of bariatric sample
		F	85.7%
		F	87.4%
		F	84.4%
		F	98.7%
		F	98.7%
Traumatic stressors			
Item #	Item (scale/subscale)	Response	% of bariatric sample
		F	77.1%
		F	75.1%
		F	91.5%
		F	86.0%

Substance use

Item #	Item (scale/subscale)	Response	% of bariatric sample
		F	97.4%
		F	98.5%
		F	94.2%
		F	99.1%
		F	93.1%
		F	98.8%
		F	99.6%
		F	98.2%
		VT	88.9%
		VT	75.6%
		VT	74.8%
		F	97.2%
		F	98.3%
		F	97.0%
		F	99.5%
		F	28.2%
		F	99.0%
		F	17.5%
		VT	88.5%
		F	98.3%
		F	99.6%
		F	99.9%
		F	99.7%
		F	18.6%

Stress and anger

Item #	Item (scale/subscale)	Response	% of bariatric sample
		F	63.7%
		F	91.8%
		F	84.5%
		F	83.1%
		F	83.2%
		F	71.2%
		F	90.4%

Interpersonal and social support			
Item #	Item (scale/subscale)	Response	% of bariatric sample
		VT	71.5%
		VT	71.2%
		VT	70.7%
		F	98.6%

^a Critical item. ^b Reverse scored item.

PAI Item Responses

PAI Item Responses															
1.	VT	44.	F	87.	F	130.	F	173.	ST	216.	ST	259.	VT	302.	F
2.	F	45.	F	88.	MT	131.	F	174.	MT	217.	MT	260.	F	303.	F
3.	F	46.	F	89.	F	132.	F	175.	F	218.	VT	261.	F	304.	MT
4.	F	47.	F	90.	F	133.	MT	176.	ST	219.	MT	262.	F	305.	F
5.	ST	48.	ST	91.	F	134.	F	177.	F	220.	F	263.	ST	306.	VT
6.	F	49.	F	92.	F	135.	F	178.	VT	221.	VT	264.	F	307.	VT
7.	ST	50.	F	93.	MT	136.	F	179.	F	222.	F	265.	F	308.	VT
8.	VT	51.	F	94.	MT	137.	F	180.	F	223.	F	266.	F	309.	F
9.	F	52.	F	95.	F	138.	F	181.	F	224.	ST	267.	MT	310.	VT
10.	ST	53.	MT	96.	MT	139.	VT	182.	F	225.	MT	268.	ST	311.	F
11.	VT	54.	F	97.	F	140.	F	183.	F	226.	VT	269.	F	312.	F
12.	ST	55.	F	98.	F	141.	F	184.	F	227.	VT	270.	MT	313.	MT
13.	ST	56.	MT	99.	ST	142.	VT	185.	MT	228.	ST	271.	ST	314.	F
14.	F	57.	F	100.	F	143.	F	186.	VT	229.	MT	272.	F	315.	F
15.	F	58.	ST	101.	F	144.	ST	187.	F	230.	MT	273.	F	316.	F
16.	VT	59.	ST	102.	F	145.	ST	188.	ST	231.	F	274.	F	317.	VT
17.	F	60.	F	103.	F	146.	MT	189.	F	232.	F	275.	F	318.	VT
18.	MT	61.	F	104.	ST	147.	F	190.	MT	233.	F	276.	F	319.	VT
19.	F	62.	F	105.	F	148.	MT	191.	F	234.	F	277.	VT	320.	VT
20.	F	63.	F	106.	F	149.	F	192.	F	235.	MT	278.	F	321.	F
21.	F	64.	MT	107.	F	150.	F	193.	MT	236.	F	279.	F	322.	F
22.	F	65.	F	108.	F	151.	F	194.	F	237.	MT	280.	F	323.	F
23.	F	66.	F	109.	VT	152.	F	195.	F	238.	F	281.	F	324.	F
24.	F	67.	F	110.	ST	153.	F	196.	F	239.	F	282.	ST	325.	F
25.	F	68.	F	111.	F	154.	F	197.	MT	240.	MT	283.	F	326.	VT
26.	F	69.	F	112.	VT	155.	F	198.	F	241.	F	284.	F	327.	ST
27.	F	70.	F	113.	F	156.	F	199.	F	242.	F	285.	MT	328.	F
28.	ST	71.	F	114.	F	157.	F	200.	F	243.	F	286.	MT	329.	F
29.	F	72.	F	115.	ST	158.	F	201.	VT	244.	ST	287.	MT	330.	MT
30.	F	73.	F	116.	F	159.	MT	202.	MT	245.	MT	288.	VT	331.	VT
31.	F	74.	F	117.	ST	160.	VT	203.	F	246.	MT	289.	F	332.	F
32.	F	75.	MT	118.	F	161.	VT	204.	F	247.	F	290.	VT	333.	ST
33.	F	76.	F	119.	F	162.	F	205.	MT	248.	ST	291.	VT	334.	VT
34.	F	77.	VT	120.	F	163.	F	206.	F	249.	F	292.	F	335.	F
35.	ST	78.	F	121.	F	164.	MT	207.	ST	250.	F	293.	MT	336.	ST
36.	ST	79.	F	122.	MT	165.	ST	208.	F	251.	VT	294.	VT	337.	VT
37.	MT	80.	VT	123.	F	166.	ST	209.	F	252.	MT	295.	VT	338.	F
38.	F	81.	VT	124.	VT	167.	F	210.	F	253.	MT	296.	MT	339.	F
39.	F	82.	VT	125.	F	168.	ST	211.	VT	254.	F	297.	ST	340.	F
40.	F	83.	F	126.	F	169.	F	212.	F	255.	F	298.	VT	341.	VT
41.	VT	84.	F	127.	F	170.	F	213.	ST	256.	MT	299.	VT	342.	F
42.	VT	85.	F	128.	ST	171.	F	214.	F	257.	MT	300.	F	343.	MT
43.	F	86.	F	129.	F	172.	MT	215.	F	258.	F	301.	VT	344.	MT

End of Report